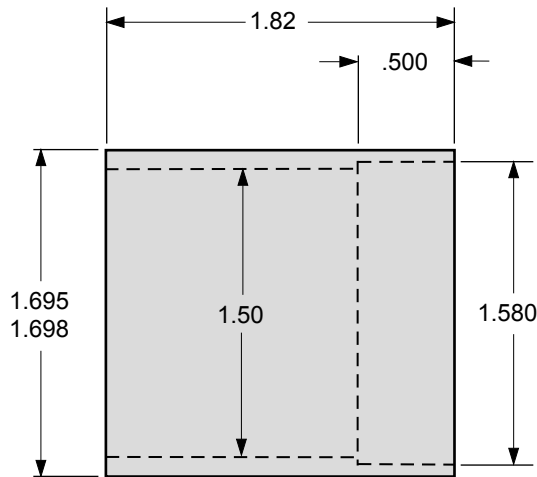


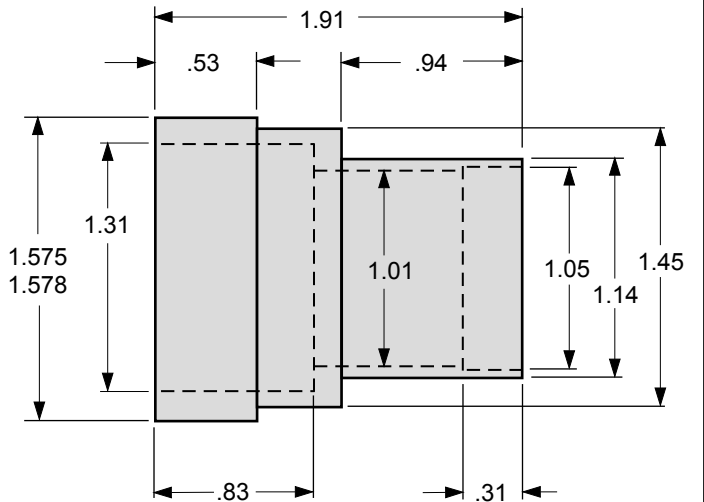
**A**

MAIN BODY -  
6061-T6 ALLOY  
ALUMINUM BAR STOCK



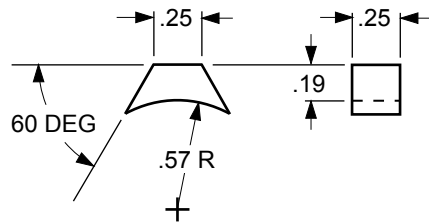
**B**

LIGHT RING, ACRYLIC SLEEVE -  
TURN FROM 1.75 x .125 WALL  
CLEAR ACRYLIC TUBE



**C**

FORWARD LENS -  
6061-T6 ALLOY  
ALUMINUM BAR STOCK



**D**

SIDE BLOCK, FWD LENS -  
6061-T6 ALLOY  
ALUMINUM PLATE STOCK

**NOTES:**

- \*SLEEVE "B" SHOULD BE A PRECISION SLIP FIT INTO MAIN BODY "A".
- \*FWD LENS "C" SHOULD BE A PRECISION SLIP FIT INTO SLEEVE "B".
- \*ATTACH SIDE BLOCK "D" WITH CA ADHESIVE.
- \*LENS "ADJUSTING ARM" SHOULD PASS THROUGH MAIN BODY "A" AND ACRYLIC SLEEVE "B", THREADING INTO FORWARD LENS "C" (SEE SKETCH ON L/H LENS DRAWING)

	TITLE <b>LENS ASS'Y - RIGHT HAND, WITH LIGHT RING, ECTO-GOGGLES</b>		
	SCALE <b>1:1</b>	MEDIA SIZE <b>8.5 x 11</b>	
	DRAWN BY <b>"Busybuildr"</b>	DATE <b>6-1-08</b>	