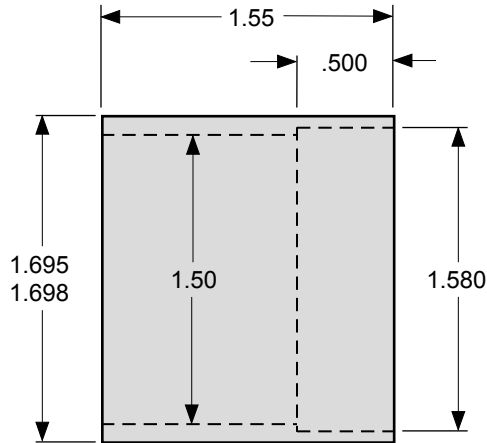


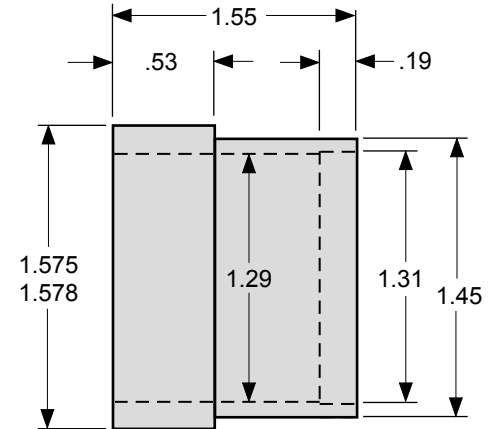
A

MAIN BODY -
6061-T6 ALLOY
ALUMINUM BAR STOCK



B

LIGHT RING, ACRYLIC SLEEVE -
TURN FROM 1.75 O.D. x .125 WALL
CLEAR ACRYLIC TUBE

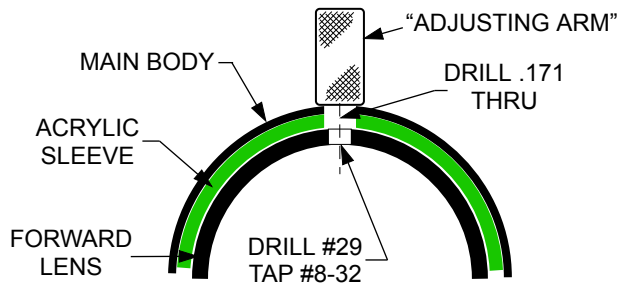


C

FORWARD LENS -
6061-T6 ALLOY
ALUMINUM BAR STOCK

NOTES:

- *SLEEVE "B" SHOULD BE A PRECISION SLIP FIT INTO MAIN BODY "A".
- * FWD LENS "C" SHOULD BE A PRECISION SLIP FIT INTO ACRYLIC SLEEVE "B".
- *LENS "ADJUSTING ARM" SHOULD PASS THROUGH MAIN BODY "A" AND SLEEVE "B", THREADING INTO FWD LENS "C".



LENS ASSEMBLY

FORWARD LENS IS RETAINED IN PLACE BY THREADED "ADJUSTING ARM".

	TITLE LENS ASS'Y, - LEFT HAND, WITH LIGHT RING, ECTO GOGGLES	
	SCALE 1:1	MEDIA SIZE 8.5 x 11
	DRAWN BY "Busybuildr"	DATE 6-1-08